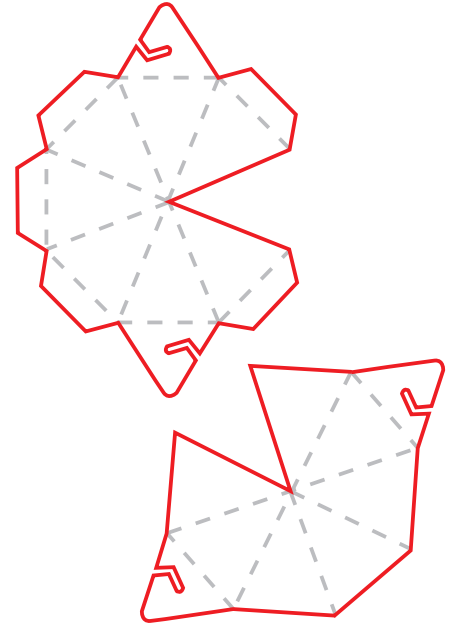


## MAKING THE FISH TEMPLATE

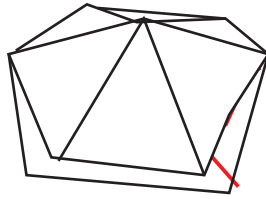
YOU NEED TO CUT OUT THE TEMPLATE WITH A CUTTING KNIFE OR SCISSORS (THE RED LINES),

THEN USING A RULER AND SCISSORS CREATE SCORE LINES SO IT IS EASIER TO FOLD THE CARD.

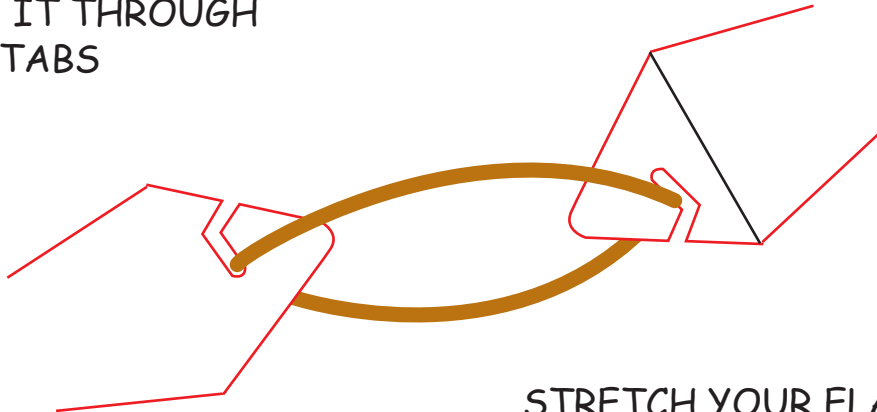
YOUR SCORE LINES ARE IN GREY



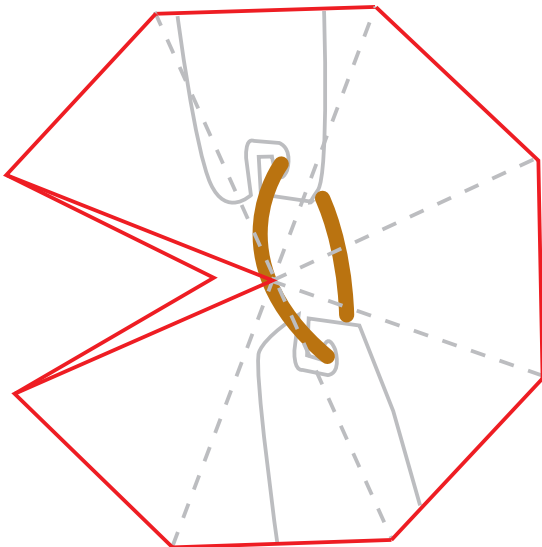
FOLD YOUR NET IN TO THIS SHAPE



UNFOLD YOUR FISH AND TAKE AN ELASTIC BAND AND THREAD IT THROUGH THE TABS



STRETCH YOUR ELASTIC BAND OVER TO THE EDGE WITH THE OTHER TABS



STICK ALL YOUR TABS DOWN WITH DOUBLE SIDED TAPE IF IT IS DONE CORRECTLY YOUR FISH SHOULD POP UP!

IT IS VERY COMPLICATED TO GET THE ELASTIC BAND ON CORRECTLY SO IF YOU NEED HELP JUST ASK